

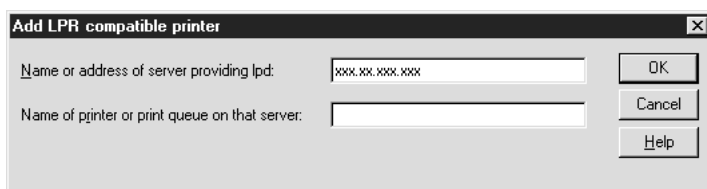
Note for Windows NT 4.0 Users

Monitoring LPR printers after installing the printer software

Your printer comes with EPSON Status Monitor 3. Status Monitor is an utility program which monitors and displays printing status and error information. It is installed when the printer driver is installed.

When you access LPR printers in a Windows NT 4.0 environment, specify only the IP address of the lpd server. **DO NOT** specify the name of the printer or the print queue on the server.

If the name of the printer or the print queue is specified, EPSON Status Monitor 3 cannot monitor LPR printers in a Windows NT 4.0 environment.



If the name of the printer or the print queue are specified, you cannot monitor LPR printers, even those which were monitored with EPSON Status Monitor 2.

To restore monitoring, reset the LPR port settings.